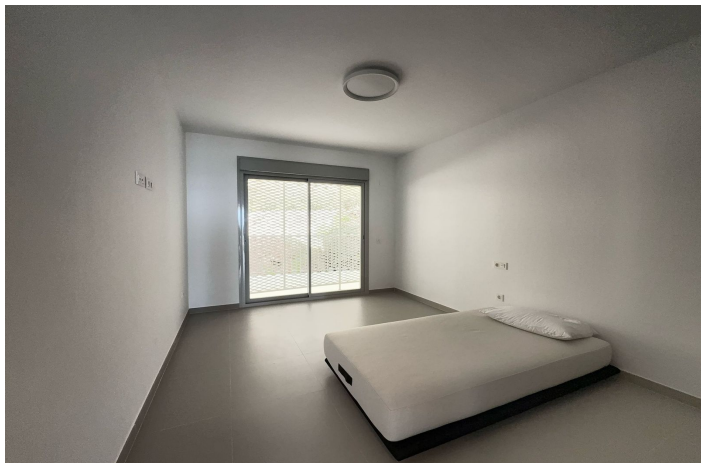




## Middle Floor Apartment for sale in Benalmádena, Benalmádena

625,000 €

Reference: R5017081   Bedrooms: 2   Bathrooms: 2   Build Size: 96m<sup>2</sup>   Terrace: 27m<sup>2</sup>





## Costa del Sol, Benalmádena

Outstanding 2 bedroom apartment in Stupa Hills. This beautiful 2 bedroom apartment with un interrupted sea view is a unique opportunity. Being walking distance to all facilities and still having a lot of privacy and peace and quiet. The apartment is fully equipped with all electric appliances. Spacious salon with open plan kitchen has open Seaview from each corner. The master bedroom is a decent large size bedroom with open sea views and on suite bathroom with a bath. The secondary bedroom has a bathroom with a shower. This beautiful complex Stupa Hills in Benalmadena offers facilities like spa, sauna, steamroom, swimming pools and gym. Middle Floor Apartment, Benalmadena, Costa del Sol. 2 Bedrooms, 2 Bathrooms, Built 96 m<sup>2</sup>, Terrace 27 m<sup>2</sup>. Setting : Close To Port, Close To Schools, Urbanisation. Orientation : North. Condition : Excellent, New Construction. Pool : Communal. Climate Control : Air Conditioning, Hot A/C, Cold A/C. Views : Sea, Mountain. Features : Covered Terrace, Lift, Fitted Wardrobes, Near Transport, Private Terrace, WiFi, Gym, Storage Room, Utility Room, Double Glazing, Fiber Optic. Furniture : Part Furnished. Garden : Easy Maintenance. Security : Gated Complex, Electric Blinds. Parking : Underground. Category : Investment, Luxury, Resale.



## Features:

### Features

Covered Terrace  
Lift  
Near Transport  
Private Terrace  
Storage Room  
Double Glazing  
Fitted Wardrobes  
WiFi  
Gym  
Utility Room  
Fiber Optic

### Views

Sea  
Mountain

### Pool

Communal

### Security

Gated Complex  
Electric Blinds

### Orientation

North

### Setting

Close To Port  
Urbanisation  
Close To Schools

### Furniture

Part Furnished

### Parking

Underground

### Climate Control

Air Conditioning  
Cold A/C  
Hot A/C

### Condition

Excellent  
New Construction

### Garden

Easy Maintenance

### Category

Investment  
Luxury  
Resale