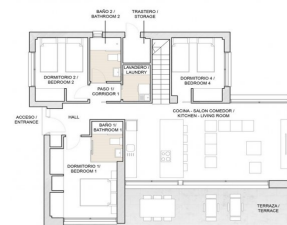




Detached Villa for sale in Orihuela, Orihuela

429,000 €

Reference: SP0786 Bedrooms: 4 Bathrooms: 3 Plot Size: 304m² Build Size: 144m² Terrace: 71m²

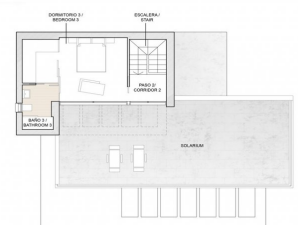


PLANTA BAJA /
GROUND FLOOR

Superficie construida / Built area
PROPIEDAD / PROPERTY 144.41 m²
TERRAZAS / TERRACES 71.00 m²
SOLARIDAD 215.41 m²
TOTAL CONSTRUIDA / BUILT AREA 215.41 m²

Planta Baja / Ground Floor
Superficies útiles / Useful surface

ACCESO / ENTRANCE 1.38 m²
HALL 5.45 m²
DORMITORIO 1 / BEDROOM 1 13.03 m²
BAÑO 1 / BATHROOM 1 5.52 m²
COCINA-SALÓN-COMEDOR / KITCHEN-LIVING ROOM 35.70 m²
DORMITORIO 2 / BEDROOM 2 9.37 m²
DORMITORIO 3 / BEDROOM 3 9.28 m²
BAÑO 2 / BATHROOM 2 3.84 m²
PASO 1 / CORRIDOR 1 1.85 m²
LAVADERO / LAUNDRY 2.80 m²
TRANSTERO / STORAGE 1.85 m²
TERRAZA / TERRACE 10.88 m²



PLANTA ALTA /
TOP FLOOR

Planta Alta / Top Floor
Superficies útiles / Useful surface
ESCALERA / STAIR 5.10 m²
PASO 2 / CORRIDOR 2 2.79 m²
DORMITORIO 4 / BEDROOM 4 9.80 m²
BAÑO 3 / BATHROOM 3 4.10 m²
SOLARIDAD 52.20 m²



Costa Blanca South, Orihuela

NEW BUILD VILLAS IN VISTABELLA GOLF RESORT, ORIHUELA COSTA New Build luxury villas built over 2 floors situated in Vistabela golf resort, between San Miguel and Los Montesinos in the Orihuela Costa. Villas with 4 bedrooms, 3 bathrooms, an open plan living room with the kitchen, big solarium, garden with parkig and space for the private pool. An options a private pool at an extra cost. Vistabella Golf resort has security entrance, 18 hole golf course, padel courts, bowling greens, supermarket and a great selection of bars and restaurants. Plans are now agreed for a new clubhouse, champagne bar, sushi bar, spa hotel, artificial beach, tennis court, football pitch, gourmet bar and much more transforming this resort into a 5 star luxury complex. Sandy beaches of La Mata and Guardamar del Segura located only 20 minues drive away. Alicante airport located 40 minutes away and Murcia airport about 1 hour away.



Features:

Features

Number of Parking Spaces: 1

Near Schools

Parking - Space

Near Golf / Golf Resort Property

Solarium: Yes

Double Bedrooms: 4

Air Conditioning: Pre-Installed

Gated

Location: Urbanisation

Beach: 14000 Meters

Useable Build Space: 125 Msq.

Terrace: 71 Msq.

Near Commercial Center

Energy Rating

B

CO2 Emission Rating

B