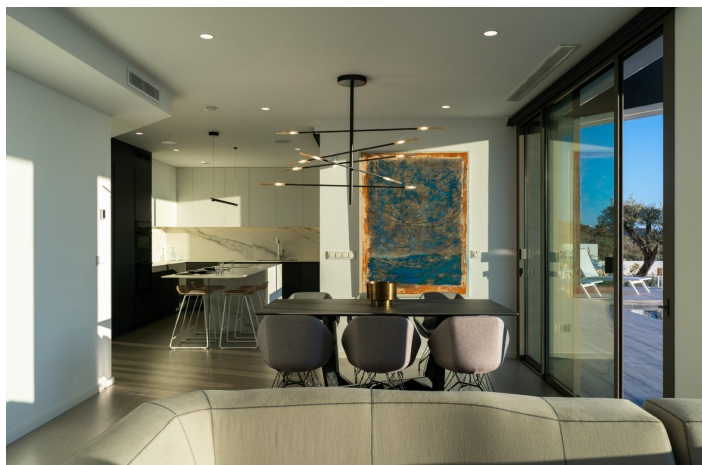




## Detached Villa for sale in Benitachell, Benitachell

2,950,000 €

Reference: SP0756   Bedrooms: 4   Bathrooms: 6   Plot Size: 1,168m<sup>2</sup>   Build Size: 234m<sup>2</sup>   Terrace: 148m<sup>2</sup>





---

## Costa Blanca North, Benitachell

**NEW BUILD LUXURY VILLA IN CUMBRE DEL SOL** New Build iconic villa in Benitachell. Its design from the 21st century blends in with the exclusive surroundings of Residential Resort Cumbre del Sol perfectly. It is built on a 1168m<sup>2</sup> plot of land, where, as the villa faces the southwest you can see and enjoy amazing sunsets. Everything about this villa shouts out quality and style, with an intelligent design that offers a practical distribution of the villa that optimises, even more, its exceptional views of the Mediterranean. A home with many spaces to enjoy lounging around and family life in front of the sea. There are several rooms all connected with each other to be able to live different moments of the day in different settings. A dining room and living room, a kitchen with a central island where you could enjoy a perfect breakfast, and a large summer porch with a BBQ. All these rooms are laid out so you can enjoy good conversation, celebrate important family events or for you to just relax gazing at the sea. The main bedroom was designed thinking about comfort and relaxation. It is a private area with a large en suite bathroom with bath and shower facing the sea. It also has a large walk-in-closet and access to a private terrace. Cumbre del Sol is located in Benitachell in the heart of the mountain of la Llorenca, north of the Costa Blanca. It lies between the two coastal towns of Javea and Moraira and it's surrounded by exceptional protected areas such as the Natural Park of La Granadella. It's very close to wonderful beaches and coves and cities like Denia, Calpe and Altea. Whether you enjoy a couple of days, a holiday, a season, or the full year in our luxury resort in Benitachell, you'll find that Cumbre del Sol meets your every expectation. Golfers, divers, nature-lovers, and sun-seekers are just minutes from the dozens of heavenly destinations on the Costa Blanca that surround our development.



## Features:

### Features

Terrace: 148 Msq.  
Garden  
Near Schools  
Number of Parking Spaces: 2  
Parking - Space - Garage - Double  
Garage  
Location: Coastal, Urbanisation  
BBQ  
Beach: 500 Meters  
Double Bedrooms: 4  
Private Pool  
Air Conditioning: Pre-Installed  
Gated  
Key Ready  
Views: Sea  
Near Commercial Center  
Useable Build Space: 185 Msq.

### Energy Rating

A

### CO2 Emission Rating

A