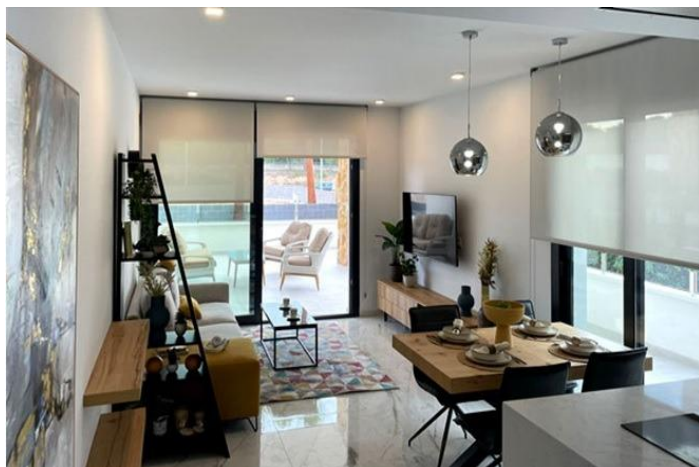




## Penthouse for sale in Guardamar del Segura, Guardamar del Segura

449,000 €

Reference: N8032   Bedrooms: 2   Bathrooms: 2   Build Size: 76m<sup>2</sup>   Terrace: 117m<sup>2</sup>





---

## Costa Blanca South, Guardamar del Segura

**NEW BUILD RESIDENTIAL IN GUARDAMAR DEL SEGURA** New Build Residential located in front of the Segura River and close to the marina and beach of Guardamar. Modern style building of 31 apartments with 2 bedrooms and penthouses with 2 and 3 bedrooms, all with 2 bathrooms, open plan kitchen with living room, fitted wardrobes, spacious terraces from 20m<sup>2</sup>, underground parking and closed storage room. The building will consist of 9 floors, the highest of which will be penthouses with main terrace and private solarium. Guardamar del Segura is a town located on the Costa Blanca South. With its 11 kilometres of natural beach and its large pine forest. Guardamar is a quiet town to live in, it has all the services throughout the year such as restaurants, bars, shops, banks, places for leisure, etc. Every Wednesday, in the central streets of the town, a market is organised where many people go to buy products such as food, clothing, furniture, animals, etc. It is a great claim and inhabitants of the surrounding town come to Guardamar every Wednesday to visit the market. Guardamar del Segura has a large port with activities throughout the year, it has a large sports centre with paddle tennis, tennis, soccer and a large heated swimming pool that works all year round. It also has a library where there is free wifi and computers. Guardamar del Segura is only 20km away from the Alicante - Elche (El Altet) airport, where there are many flights every day with connections to the main European cities, due to the demand for tourists on the Costa Blanca.



## Features:

### Features

Number of Parking Spaces: 1  
Near Schools  
Location: Coastal, Urbanisation  
Parking - Space  
Useable Build Space: 66 Msq.  
Solarium: Yes  
Terrace: 117 Msq.  
Air Conditioning: Pre-Installed  
Gated  
Communal Pool  
Elevator/Lift  
Double Bedrooms: 2  
Near Commercial Center  
Beach: 1000 Meters

### Energy Rating

B

### CO2 Emission Rating

B