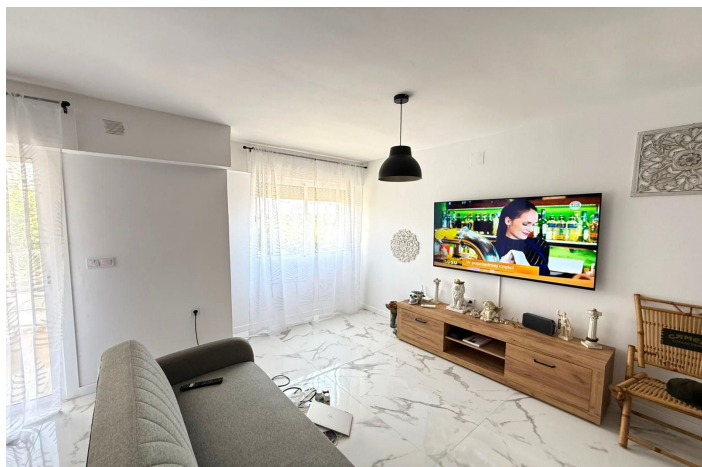
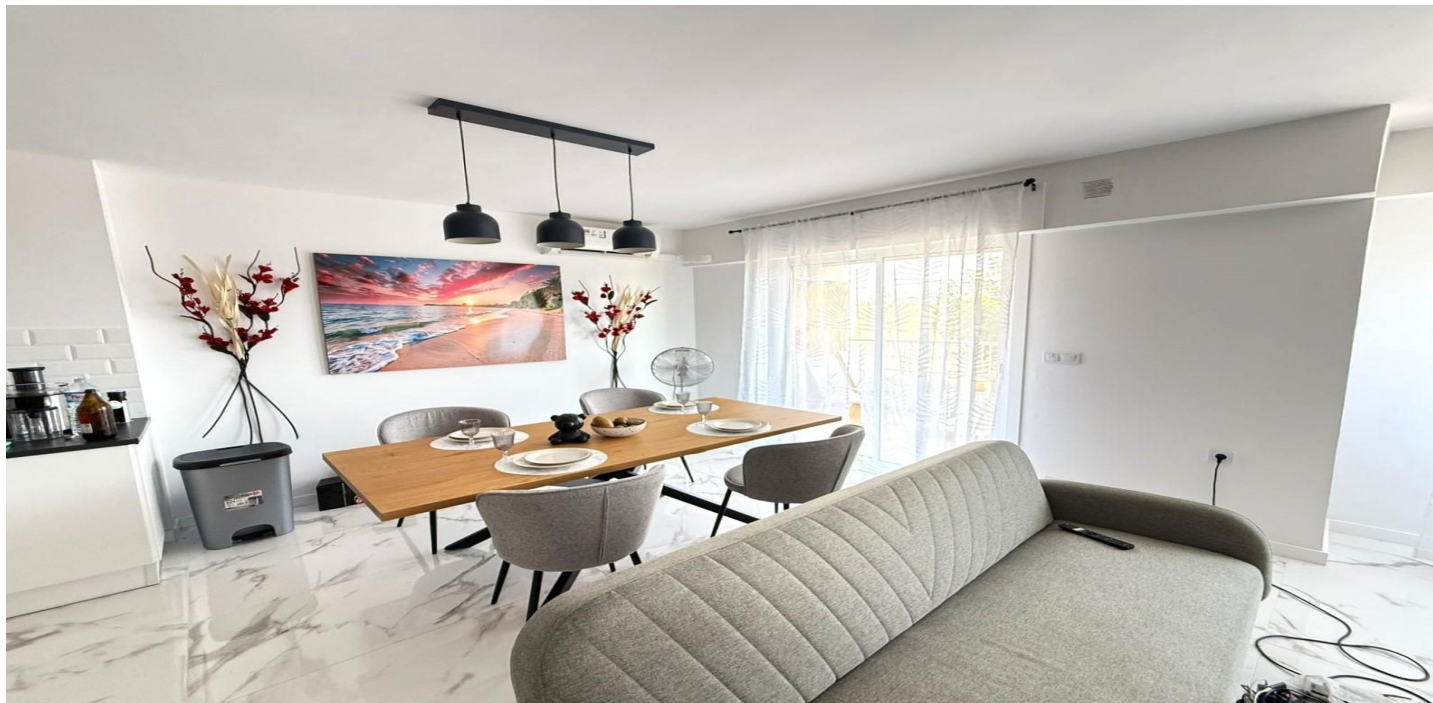




## Tussenverdieping Appartement te koop in Punta Prima, Orihuela Costa

275.000 €

Referentie: R5104585 Slaapkamers: 2 Badkamers: 2 Perceelgrootte: 95m<sup>2</sup>





---

## Costa Blanca South, Punta Prima

Bright 2 bedroom flat with swimming pool and garage in Punta Prima Located on an elevated ground floor, this property combines the privacy of a home with the tranquillity of a unique natural environment. The complete refurbishment includes new, state-of-the-art appliances, all brand new and with warranty, as well as brand new furniture, ready to move in. Each space has been tastefully designed, using modern materials. The flat has two spacious bedrooms that invite you to relax, and a large living room that blends harmoniously with the open kitchen, creating a perfect atmosphere to share with family or friends. From the two north-east facing terraces you can enjoy unobstructed sea views that turn every breakfast or sunset into a special experience. In addition, the urbanisation offers a large communal swimming pool with lifeguard service, perfect for cooling off and relaxing in complete safety. As an added value, the property borders directly on a protected natural park that belongs to the heritage of the King of Spain, guaranteeing a green, quiet environment with unalterable views. A unique opportunity to live surrounded by nature and comfort, in a safe, private and valuable environment. LOCATION: It is primarily an exclusive residential area with all necessary and comfort surrounded by greenery. Surrounded by good restaurants by the sea, it is the perfect place to rest. It has good connections both by road and National Highway. It also has good bus and taxi connections a few meters away. It has both sandy beaches and rocky coves. The closest hospital is the Hospital Universitario de Torrevieja (2 km away) and within minutes you can find the Hospital Quirónsalud Torrevieja. It is also close to airports such as Region of Murcia International Airport (35 km away) and Alicante Airport (47 km away). DISTANCE TO THE SEA: 300m COMMUNITY: 480 €. IBI: 190 €. Should you have any question do not hesitate to contact us!



## Kenmerken:

### Extra's

Privé Terras

Houten vloeren

Access for people with reduced mobility

### Uitzicht

Zeezicht

### Meubilering

Volledig gemeubileerd

### Zonorientatie

North East Orientation

### Huidige Staat

Uitstekende conditie

### Keuken

Volledig ingerichte keuken

### Klimaatbeheersing

Airconditioning

Centrale verwarming

### Zwembad

Gemeenschappelijk zwembad

### Parkeergelegenheid

garage