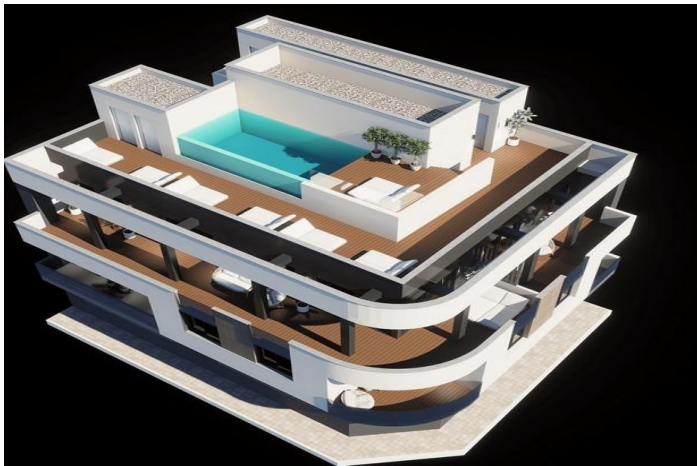




Penthouse for sale in Torrevieja, Torrevieja

302,600 €

Reference: N9110 Bedrooms: 2 Bathrooms: 2 Build Size: 59m² Terrace: 14m²





Costa Blanca South, Torrevieja

Modern New Build Apartments in Central Torrevieja – Just 600 m from the Sea Discover this exclusive boutique development of only 8 modern new build apartments, perfectly located in the heart of Torrevieja. Just 600 m from Playa de Los Locos and 650 m from the famous Playa del Cura with its lively promenade, these homes offer the ideal blend of beachside living and urban convenience. Contemporary Design and Smart Layouts Choose between stylish 1-bedroom apartments with 1 bathroom or spacious 2-bedroom units with 2 bathrooms. Each property is designed with a modern, functional layout that maximizes natural light and comfort. High-quality finishes ensure durability and elegance, making these homes perfect for both permanent living and holiday stays. Exclusive Building Amenities Residents can relax in the communal rooftop solarium or take a dip in the shared rooftop pool, the perfect place to unwind after a day at the beach. Optional rooftop storage rooms are available at an additional cost, providing extra convenience and security. Vibrant Lifestyle in Torrevieja Torrevieja is a lively coastal city renowned for its year-round cultural and leisure activities. With over 300 days of sunshine annually, the area is ideal for outdoor living, beach days, water sports, and evening walks along the seafront. All essential services, including supermarkets, restaurants, cafés, and entertainment venues, are within walking distance. Excellent Location and Connectivity This central location offers quick access to key attractions and amenities: Playa de Los Locos: 600 m Playa del Cura: 650 m Torrevieja Marina: 2 km Zenia Boulevard Shopping Centre: 8 km Golf courses: 7–10 km Alicante Airport: 45 km Your Mediterranean Home Awaits Whether you are seeking a holiday retreat, an investment property, or a permanent residence, these modern new build apartments in Torrevieja provide the perfect opportunity to enjoy the Mediterranean lifestyle in a prime location. Contact us today to arrange a viewing and secure your place in this exclusive coastal development. 962



Features:

Features

Lift
Near Schools
Terrace: 14 Msq.
Beach: 600 Meters
Useable Build Space: 53 Msq.
Location: Coastal
Communal Pool
Elevator/Lift
Double Bedrooms: 2
Space
Near Bus Route
Near Commercial Center

Pool

Communal Pool

Views

Pool
Urban

Setting

Beachfront

Energy Rating

B

CO2 Emission Rating

B