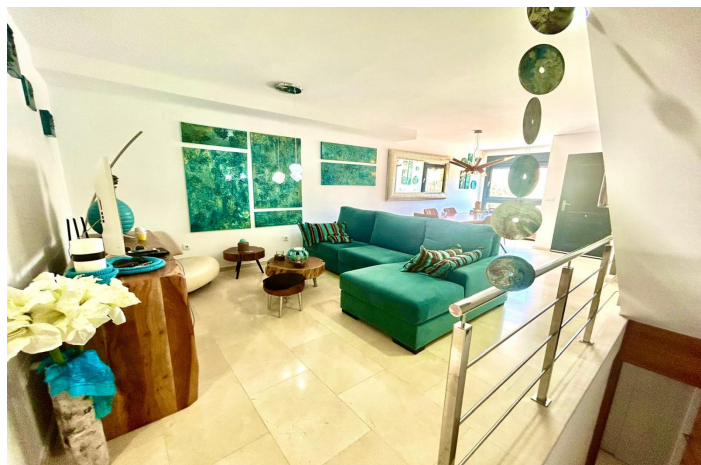
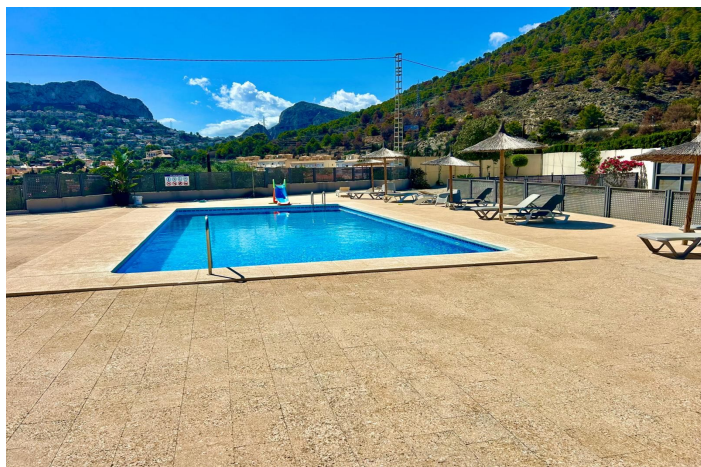




Adosada en venta en Calpe, Calpe

465.000 €

Referencia: R5141968 Dormitorios: 3 Baños: 3 Construido: 234m²





Costa Blanca North, Calpe

Exclusive 3 bedroom 2 bathroom Townhouse for sale with lift to all floors. This spacious townhouse is situated on a small complex within walking distance of Calpe town centre and all amenities, the property enjoys excellent views towards the Ifach, mountains and sea. We enter the property into the open plan living/dining room with inox and marble feature staircase leading to first floor and also the basement garage, doors lead to a good sized family bathroom and fully fitted separate kitchen with a range of fully fitted units and appliances, a single door leads out onto the rear garden and terrace area which gives access to the large communal swimming pool and private visitor parking area. From the living room stairs and lift lead to the lower basement level with large double garage with electric door, leading out into the main garage area. It is possible to access every floor via the lift from the garage. The first floor of the property consists of 2 double bedrooms with the master have in ensuite bathroom, a single bedroom and a family bathroom, from this level stairs and lift take us to us to the top floor solarium which gives amazing views both to the coast and also inland mountain views, there are two large terraces with water and electric connections and also there is a waiters kitchen with fridge and sink. Outside to the front of the property there is a gravel garden area and to the rear another garden and terrace area which has access to the kitchen, in addition to the private garage, there is further secure parking, a large communal pool with terrace and an area set aside with picnic tables. This is an excellent property that has been fitted with quality doors and furnishings, a spacious lift means easy access to all floors from the garage to the roof terrace. Please call to arrange viewings.



Características:

Características

Ascensor
Doble acristalamiento
Armarios Empotrados

Piscina

Piscina Comunitaria
Piscina Privada

Aparcamiento

Garaje