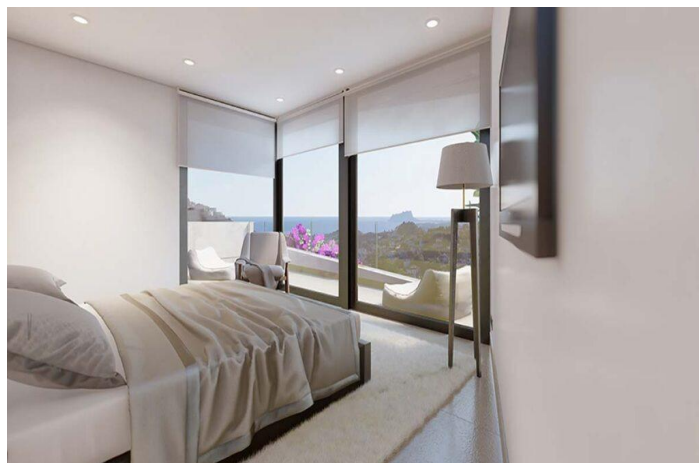
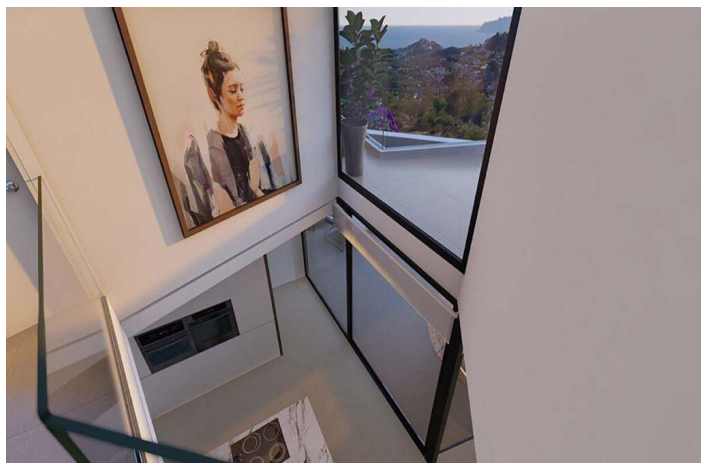




Detached Villa for sale in Benitachell, Benitachell

875,000 €

Reference: N9517 Bedrooms: 3 Bathrooms: 3 Plot Size: 328m² Build Size: 270m² Terrace: 70m²





Costa Blanca North, Benitachell

Luxury New Build Villas with Sea Views in Benitachell Exclusive Villas in Golden Valley, Poble Nou de Benitachell Discover this outstanding new build development of 16 independent villas with stunning sea views, located in the prestigious Golden Valley urbanization in Poble Nou de Benitachell, Alicante. This privileged area sits between the popular coastal towns of Moraira and Javea, offering a peaceful residential environment surrounded by nature, yet close to beaches, restaurants and essential services. The elevated position guarantees panoramic Mediterranean views and a tranquil lifestyle on the Costa Blanca. Modern Architecture and Elegant Design These contemporary villas showcase avant garde architecture combined with spacious interiors filled with natural light. Each home has been carefully designed to deliver comfort, privacy and functionality, blending indoor and outdoor living seamlessly. Clean lines, large windows and open plan spaces create an atmosphere of light, sophistication and Mediterranean charm. Spacious Layouts with Private Gardens and Pools Each villa offers approximately 290 m2 built on private plots of over 300 m2. Homes feature 3 or 4 bedrooms, with en suite bathrooms, plus a guest toilet. Distributed over three levels, the layout includes a basement with a private garage for two cars and, in some units, additional space for a gym, extra bedroom, laundry room or storage. The ground floor hosts the open plan living and dining area with a fully equipped kitchen, direct access to the terrace and private swimming pool, one bedroom with en suite bathroom and a guest toilet. The upper floor includes two additional bedrooms with en suite bathrooms and a large open terrace ideal for enjoying sea views. High Quality Features and Energy Efficiency All villas include a private swimming pool, barbecue area and chill out zone. Specifications include electric shutters, an armored entrance door, fully fitted kitchens with Bosch appliances, aerothermal system for domestic hot water, and fully installed ducted air conditioning. The development boasts an A energy rating, ensuring efficiency, comfort and reduced energy consumption. Prime Location on the Costa Blanca Poble Nou de Benitachell is a charming town known for its authentic Spanish atmosphere, beautiful countryside and proximity to some of the best beaches on the Costa Blanca. The area offers supermarkets, restaurants, medical services and international schools nearby. Key distances: Moraira beach 6 km Javea beach 8 km Benitachell town center 2 km La Sella Golf 12 km Marina de Moraira 7 km Alicante Airport 95 km Valencia Airport 120 km Your Dream Home with Sea Views These exclusive new build villas in Golden Valley combine luxury, design and a privileged location with breathtaking sea views. Contact us today to arrange a private viewing and secure your new Mediterranean home in Benitachell.



Features:

Features

Garden

Gated

Parking

storage

heating

Pool

Private Pool

Views

Sea

Pool

Setting

Beachfront

Energy Rating

A

CO2 Emission Rating

A