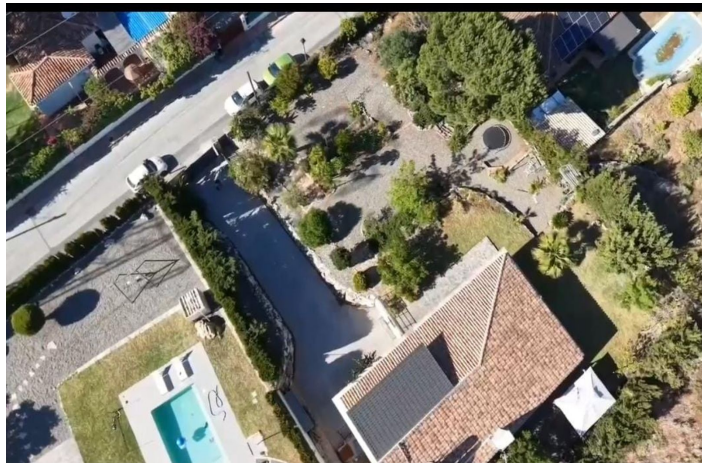




Abstandsvilla zum Verkauf in Alhaurín de la Torre, Alhaurín de la Torre

720.000 €

Referenz: R5049118 Schlafzimmer: 3 Badezimmer: 4 Grundstücksgröße: 1.300m² Garten: 299m² Terrasse: 50m²





Valle del Guadalhorce, Alhaurín de la Torre

Independent Villa for Sale in Pinos de Alhaurín – Panoramic Views and Prime Location We present this exclusive independent villa located in the prestigious area of Pinos de Alhaurín, Alhaurín de la Torre. Set in a peaceful natural environment, it's ideal for those who value privacy, natural light, and stunning open views. Built in 2008 on a 1,300 m² plot, the property is in excellent condition and is distributed over two floors plus a basement, offering spacious, comfortable, and versatile living areas. Main Floor: Bright open-plan living and dining room with fireplace and direct access to the rear porch and garden. Fully equipped open-concept kitchen. This floor also features a bathroom with shower and two spacious bedrooms, one of them with an en-suite bathroom. Large double-glazed windows throughout flood the space with natural light and ensure excellent cross ventilation, keeping the home cool in summer. Upper Floor: A versatile open area perfect for a home office or reading nook, plus a third bedroom with en-suite bathroom and beautiful unobstructed views. Basement: A large family space ideal for gatherings or guests, complete with a second kitchen, a generous living area, and a full bathroom with shower. Outdoor Area: Meticulously maintained garden with mature trees and plants offering privacy and shade. Automatic gate with ample parking space for multiple vehicles. Rear porch with access from the living room, perfect for enjoying summer evenings. Solar panels for hot water. While there is no pool currently, the plot offers ample space to build one, and plans and permits are already in place. Very bright home with ideal orientation. Located in a well-established, quiet residential area with good access. **VIEWINGS HIGHLY RECOMMENDED!!!!**



Eigenschaften:

Merkmale

Überdachte Terrasse
In der Nähe des Transports
Private Terrasse
Badezimmer
Doppelverglasung
Einstellungsschränke

Ansichten

Berg
Panorama

Garten

Privat

Orientierung

Süden
Südost
Südwesten

Zustand

Exzellent

Parken

Privat

Klimakontrolle

Kamin

Küche

Voll ausgestattet